

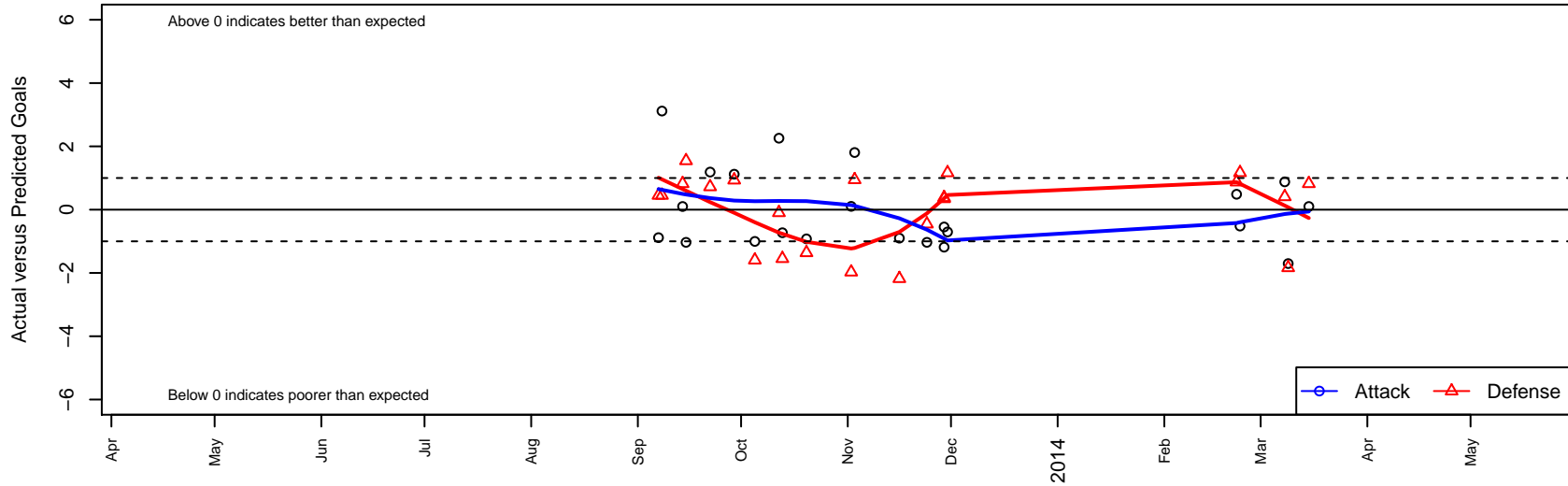
FC Los Angeles Black B01

Los Angeles, CAS
 B01 total strength=1172
 attack=4 defense=3.29
 fall league = SCDL FI1 U12
 alt names used:
 FC Los Angeles B01 Black
 FC LOS ANGELES FCLA B01 BLACK (CAS)

Venues played:
 SCDL FI1 U12
 Surf Thanksgiving Gold U12
 SoCal National Cup B01



FC Los Angeles Black B01
 Dots are actual minus expected GF (blue circles) and GA (red triangles).
 Blue line is smoothed change in attack strength. Red is smoothed change in defense strength.



| | date | home | | away | | venue | pred.home | pred.away |
|-------|-------------|--------------------------------------|---|--------------------------------------|---|----------------------------|------------------|------------------|
| 24580 | 2014-03-15 | FC Los Angeles Black B01 | 1 | LA Galaxy Academy North B01 | 1 | SoCal National Cup B01 | 0.90 | 1.82 |
| 24241 | 2014-03-09 | FC Los Angeles Black B01 | 0 | Strikers FC Irvine B01 | 3 | SoCal National Cup B01 | 1.70 | 1.17 |
| 23908 | 2014-03-08 | FC Los Angeles Black B01 | 3 | Carlsbad Lightning Red B01 | 0 | SoCal National Cup B01 | 2.12 | 0.41 |
| 23212 | 2014-02-23 | Chivas USA Pomona B01 | 0 | FC Los Angeles Black B01 | 4 | SoCal National Cup B01 | 1.17 | 4.52 |
| 22950 | 2014-02-22 | South Bay Falcons B01 | 0 | FC Los Angeles Black B01 | 2 | SoCal National Cup B01 | 0.87 | 1.51 |
| 20051 | 2013-11-30 | FC Los Angeles Black B01 | 1 | Strikers FC Irvine B01 | 0 | Surf Thanksgiving Gold U12 | 1.70 | 1.17 |
| 19572 | 2013-11-29 | Sparta United 02 Premier B01 | 0 | FC Los Angeles Black B01 | 2 | Surf Thanksgiving Gold U12 | 0.35 | 3.18 |
| 19573 | 2013-11-29 | San Diego Surf SC Academy I B01 | 1 | FC Los Angeles Black B01 | 0 | Surf Thanksgiving Gold U12 | 1.38 | 0.55 |
| 19316 | 2013-11-24 | Los Angeles Futbol Academy Black B01 | 2 | FC Los Angeles Black B01 | 0 | SCDL FI1 U12 | 1.55 | 1.03 |
| 18470 | 2013-11-16 | LA Galaxy Academy North B01 | 4 | FC Los Angeles Black B01 | 0 | SCDL FI1 U12 | 1.82 | 0.90 |
| 17226 | 2013-11-03 | FC Los Angeles Black B01 | 5 | LA Galaxy South Bay Gold B01 | 0 | SCDL FI1 U12 | 3.19 | 0.95 |
| 16748 | 2013-11-02 | LA Galaxy Academy South B01 | 4 | FC Los Angeles Black B01 | 1 | SCDL FI1 U12 | 2.03 | 0.90 |
| 15311 | 2013-10-20 | FRAM Premier B01 | 2 | FC Los Angeles Black B01 | 1 | SCDL FI1 U12 | 0.64 | 1.92 |
| 14340 | 2013-10-13 | FC Los Angeles Black B01 | 1 | Real So Cal White B01 | 3 | SCDL FI1 U12 | 1.73 | 1.45 |
| 13880 | 2013-10-12 | Exiles SC Black B01 | 1 | FC Los Angeles Black B01 | 6 | SCDL FI1 U12 | 0.90 | 3.74 |
| 12856 | 2013-10-05 | FC Golden State Academy B01 | 3 | FC Los Angeles Black B01 | 0 | SCDL FI1 U12 | 1.41 | 1.00 |
| 12332 | 2013-09-29 | FC Los Angeles Black B01 | 4 | Santa Barbara SC White B01 | 0 | SCDL FI1 U12 | 2.88 | 0.93 |
| 11400 | 2013-09-22 | FC Los Angeles Black B01 | 4 | Manhattan Beach Sand and Surf B01 | 0 | SCDL FI1 U12 | 2.81 | 0.72 |
| 10431 | 2013-09-15 | FC Los Angeles Black B01 | 0 | Los Angeles Futbol Academy Black B01 | 0 | SCDL FI1 U12 | 1.03 | 1.55 |
| 9998 | 2013-09-14 | FC Los Angeles Black B01 | 1 | LA Galaxy Academy North B01 | 1 | SCDL FI1 U12 | 0.90 | 1.82 |
| 9476 | 2013-09-08 | FC Los Angeles Black B01 | 7 | FC Golden State Gold B01 | 0 | SCDL FI1 U12 | 3.88 | 0.45 |
| 9056 | 2013-09-07 | FC Golden State Gold B01 | 0 | FC Los Angeles Black B01 | 3 | SCDL FI1 U12 | 0.45 | 3.88 |